

Technical specifications

NAVIGATOR TXM

Dimensions and weight: 160 x 170 x 55 mm; 1.1 kg

Processor: Intel PXA 255 400 MHz

Internal memory: 64 Mb SDRAM, 64 MbFLASH

External power supply: 8 to 32 V

USB ports: 1 USB 2.0 device port, 1 USB 2.0 Host port

Wireless communication with PC: Bluetooth 2.0

Diagnostics connector: AMP CPC Series 16 pin, male contacts

Communication protocols supported: Blink codes, K,L ISO9141-2, ISO14230, CAN ISO11898, ISO11519-2, SAE J1850

PWM, SAE J1850 VPW, RS485, RS232, J1939

COVERAGE OF MAKES AND MODELS

OUTBOARD ENGINES

HONDA MARINE	BF Series		
MARINER	Fourstrokes Series	OptiMax Series	Verado Series
	150, 200, 225, 250 hp		
MERCURY	Fourstrokes Series	OptiMax Series	Verado Series
SUZUKI MARINE	DF Series		
YAMAHA MARINE	F Series	T Series	Z Series

INBOARD ENGINES

FNM	HPEP Series	HPE Series	
	350 Series	377 Series	4,3L Series
	496 Series	5,0L Series	8,1S Series
MERCURISER	MX 6,2 Series	Scorpion Series	Tow Sports Series
	Vazer Series		
SEA-DOO	Speedster Series	Challenger Series	Utopia Series
VOLVO PENTA	D Series		
VOLKSWAGEN MARINE	SD Series	TDI Series	

JET SKIS

HONDA MARINE	Aquatrax Series		
KAWASAKI MARINE	STX Series	Ultra Series	
	GTI Series	GTX Series	Islandia Series
SEA-DOO	RXP and RXT Series	Wake Series	
	Waverunner FX Series	Waverunner FZR Series	Waverunner FZS Series
YAMAHA MARINE	Waverunner GP Series	Waverunner VX Series	

The above specifications refer to software version 1.0.0/September



TEXA S.p.A.
Via I Maggio, 9
31050 Monastier di Treviso
Treviso - ITALY
Tel. +39 0422 791311
Fax +39 0422 791300
www.texa.com - info@texa.it

**COMPANY WITH QUALITY MANAGEMENT
SYSTEM CERTIFIED BY DNV
= ISO 9001:2008 =**



Use your mobile phone to scan this symbol and receive further information on TEXA S.p.A. and its products*.

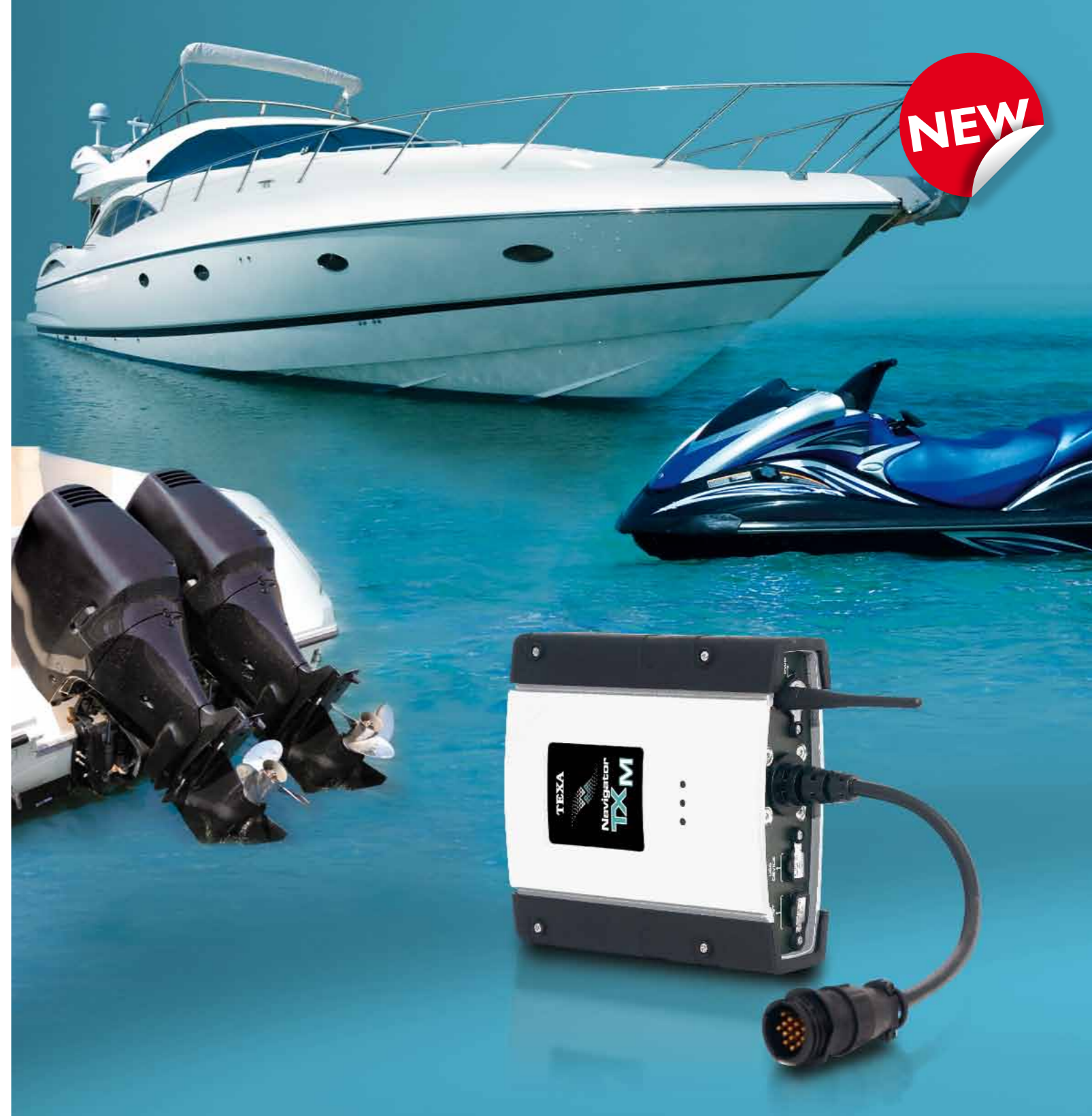
* Scanning this symbol will create a WAP push link that accesses the <http://www.texa.mobi> website without having to enter the address manually in your browser. The contents of the TEXA site can be browsed freely, while the connection charges vary based on the rates applied by your service provider. If your phone doesn't have software for reading QR codes, go to one of the numerous websites that offer these for free.

The data, descriptions and illustrations may change compared to those described in this brochure. TEXA S.p.A. reserves the right to make changes to its products without prior notice.

The **BLUETOOTH** brand is the property of Bluetooth SIG, Inc., U.S.A., and is used by TEXA S.p.A. under license.



Copyright TEXA S.p.A.
cod. 8800613
September 2009 - Inglese



NEW

NAVIGATOR TXM for marine engines



NAVIGATOR TXM: THE INNOVATIVE SOLUTION FOR MULTI-BRAND DIAGNOSTICS OF MARINE ENGINES

Navigator TXM

NAVIGATOR TXM is a multi-brand diagnostic interface designed to be used in combination with any standard PC. NAVIGATOR TXM is impact resistant and waterproof, and incorporates all the experience TEXA has accumulated in 15 years of research and development.

NAVIGATOR TXM is lightweight and practical thanks to its aluminium shell. On the inside it features a powerful INTEL PXA255 400 MHz processor and a 64Mb B memory.

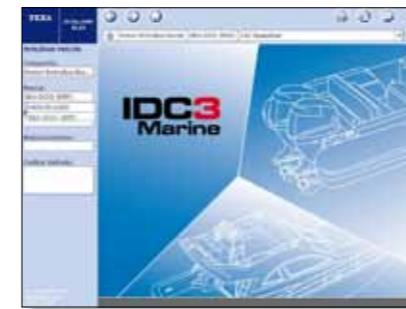
This means rapid data processing, instant recognition of control units and advanced diagnostic potential. NAVIGATOR TXM connects directly to the diagnostic socket via a dedicated set of cables and allows you to perform a great number of important diagnostic and maintenance procedures; electronic parameter reading, service light resetting, error reading and deleting are just a few examples of what the NAVIGATOR TXM can do. NAVIGATOR TXM can dialogue with any PC thanks to *Bluetooth* wireless technology. *Bluetooth* allows you to move freely around the boat without the restriction of connecting cables.



IDC3 Marine Software

IDC3 Marine is the diagnostic software designed and developed entirely by TEXA for the installation on any standard PC available on the market.

IDC3 Marine is a universal platform that allows you to dialogue with any TEXA diagnostic tool, processing data simply and intuitively. The initial screen provides a drop-down menu from which you can choose the type of engine you want to test. Additional menus allow you to select the make and model. From this point on IDC3 dialogues automatically with the electronic control units of the engine and/or boat; it runs all the necessary tests and automatically suggests auxiliary data to help you to professionally, quickly and safely complete a service. In particular IDC3 can provide additional information, explanatory images and videos, as well as wiring diagrams, component data sheets and technical bulletins related to recurring faults, or important notes regarding the particular engine model you are working on.



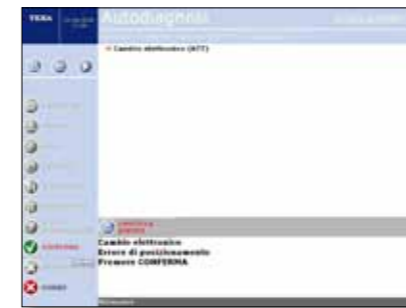
From the initial screen you can select the category and type of engine.



From the "PARAMETERS" screen you can view the engine's operating parameters in real time.



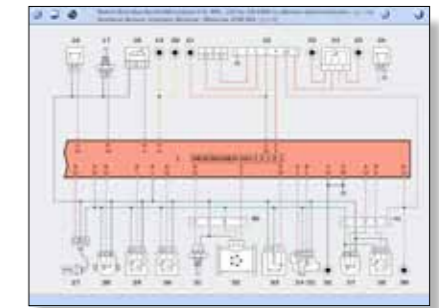
The "SETTINGS" screen allows you to adjust tachometer settings, engine parameters, trim limits, etc...



In this case the software has highlighted an error in the electronic gearbox, and is giving you both the cause and the status.



The "STATUS" page allows you to check the status of logical signals such as on/off, neutral/drive, open/closed etc...



Each wiring diagram contains a general description of the device it is associated to; you can obtain more specific information by clicking on the icon.



IDC3 Marine software allows you to carry out electronic diagnosis on pleasure craft and commercial craft engines.

To view demos showing
TEXA instruments in operation visit
www.texa.com/demo

To check out the extensive coverage of
TEXA products visit
www.texa.com/applicationlist

All TEXA products are
guaranteed for 24 months

